

NOTE: ON SPECTRUM EQUIPMENT R20 IS REPLACED WITH A JUMPER.

NOTE: ON SPECTRUM EQUIPMENT THESE IN JUMPER MAY BE IN PLACE.

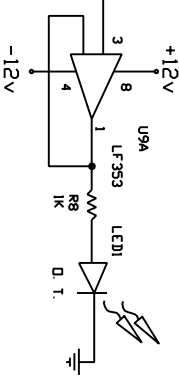
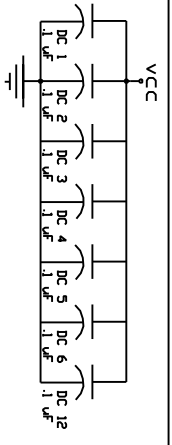
NOTE: WHEN USED WITH THE S624 INSTEAD OF THE S624 DIP SWITCH.

NOTE: ON NEVER ASSEMBLES C1 AND R1 ARE REPLACED WITH A DS1833 ECONOMY RESET IF THE POWER SUPPLY FAILS.

NOTE: ON SOME ASSEMBLIES THIS IS A SILK SCREEN ERROR THIS IS ATTACHED TO THE COIL OF RELAY 1A.

NOTE: WHEN USED AS A 6 CHANNEL RECEIVER AND ATTACHED TO THE S624 MAIN BOARD NO LINK-SIGNAL IS PROVIDED TO THE VCC SIDE OF RELAY 1A. REMOVE THE LEAD FROM VCC OF D7 TO PROVIDE ONE OR A JUMPER FROM VCC OF D7 TO PIN 11 OF U6E CAN BE USED IN EITHER CASE THE TRACE FROM U1 PIN 12 TO BE PIN 11 MUST BE CUT.

NOTES: THIS TRACE IS NOT USED. HEADER OUTPUT IS TIED TO PIN 1 ON J2. WHEN USED WITH THE S624 DIMMER MODULE, OUTPUTS 7 AND 8 ARE NOT USED AS WELL.



SPECTRUM DESIGN AND DEVELOPMENT
DMX RECEIVER SCHEMATIC (9 CHANNEL)
PROVIDED BY K & D ELECTRONICS